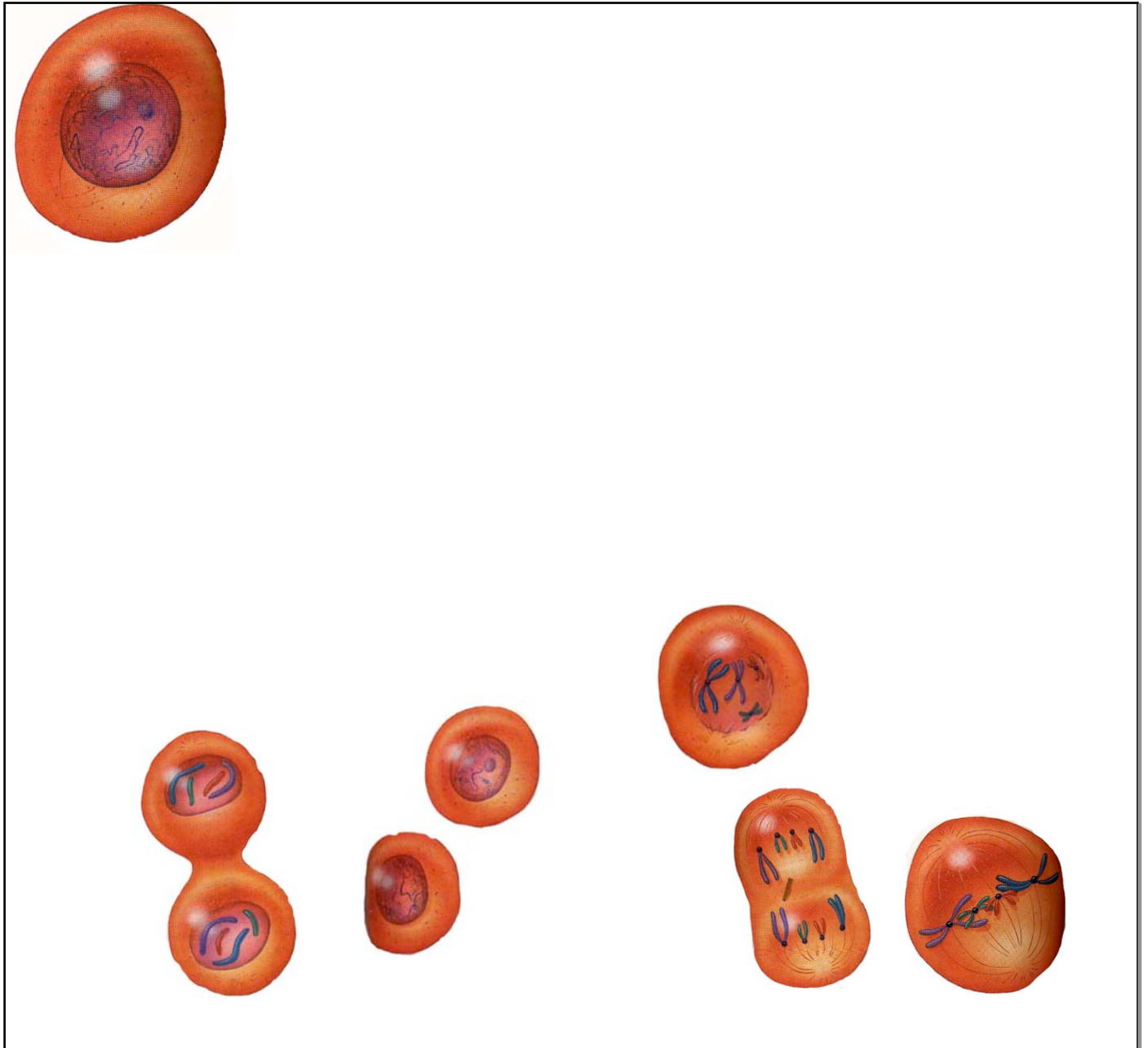
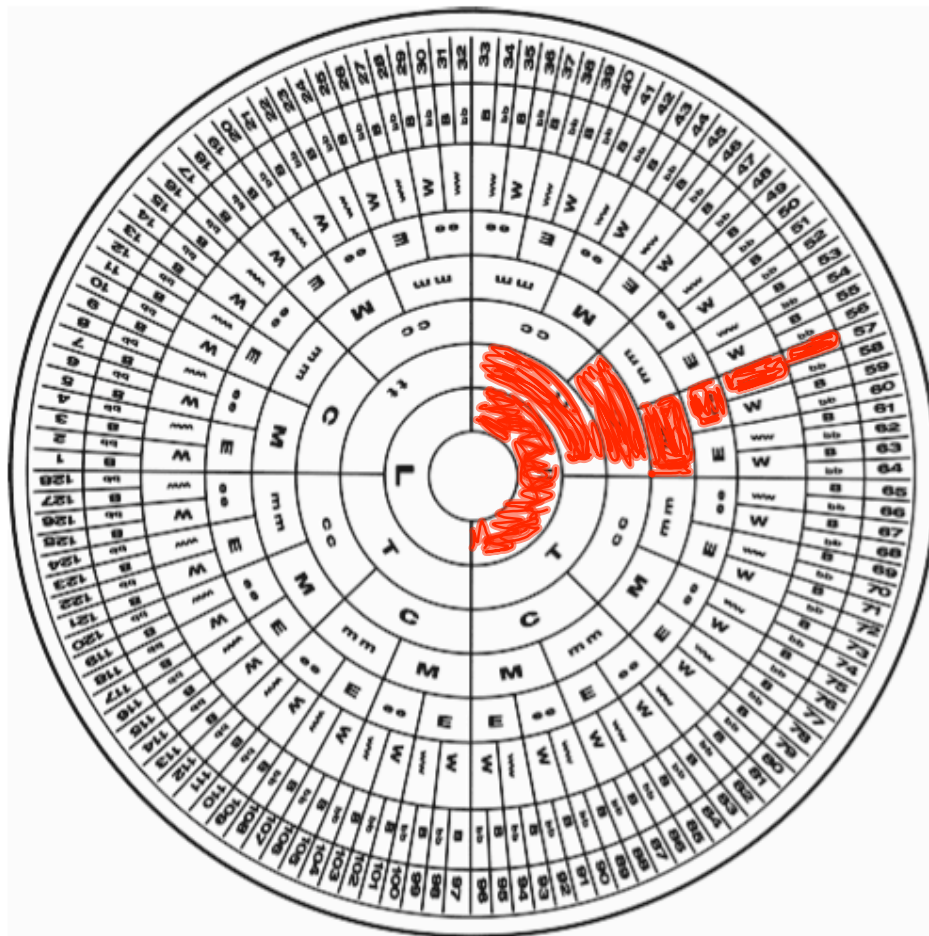


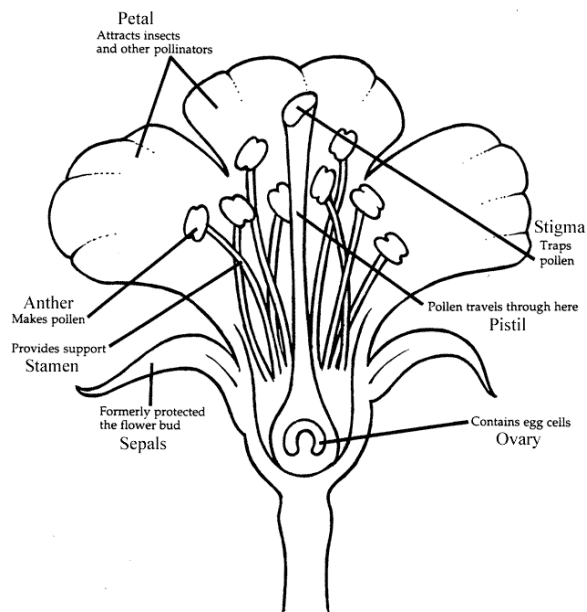
# Using a Smart Board in the Life Science Classroom





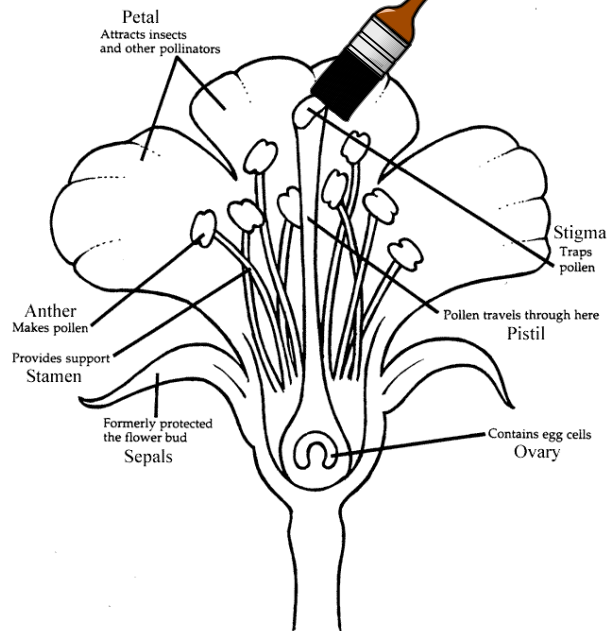
Tall X

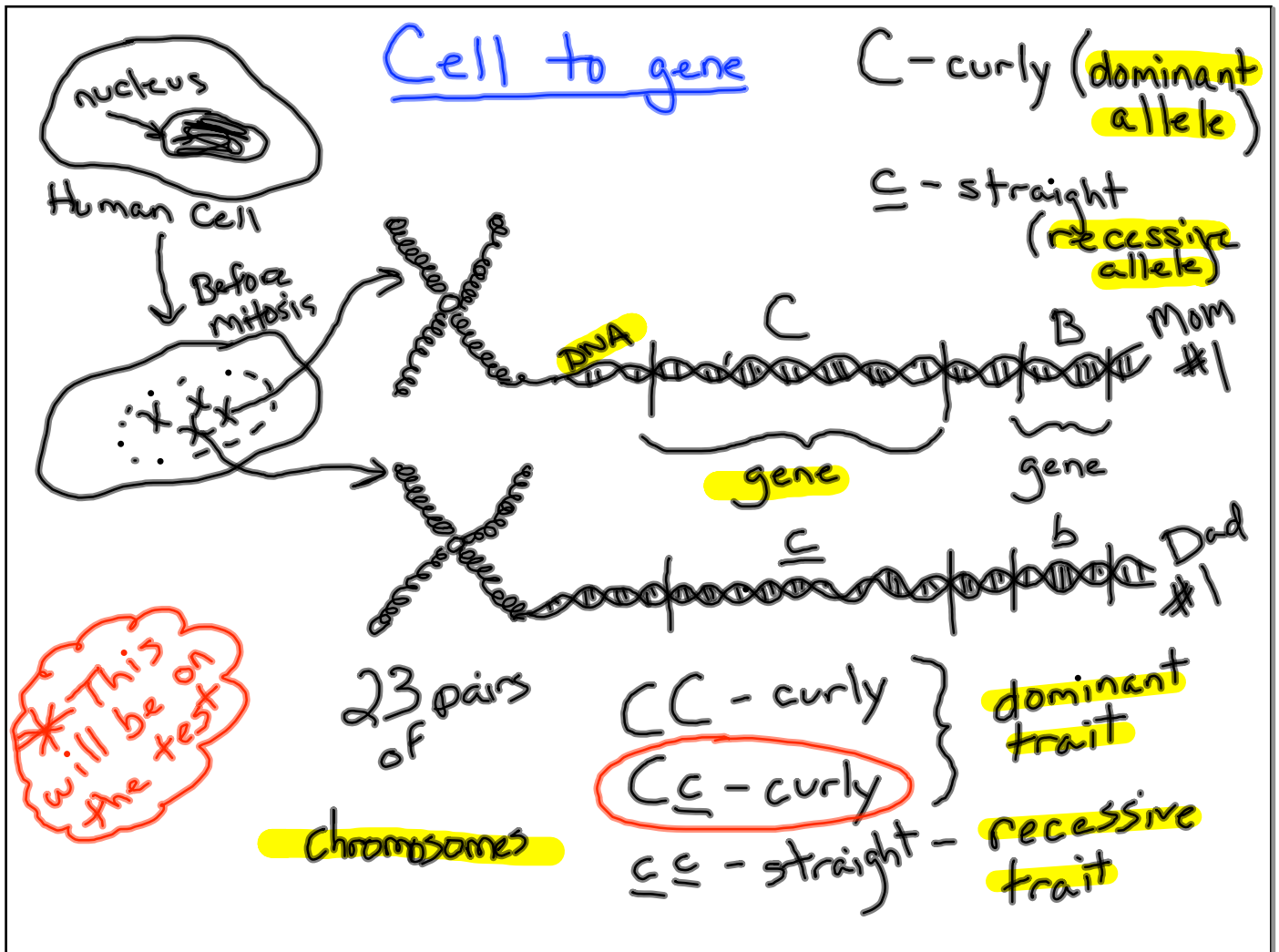
Parts of a Flower



Short

Parts of a Flower





First cross results

Second cross results

Write the correct genotypes in the circles above.

Choose:

Flower color-  
Purple / White

Seed shape-  
Round / Wrinkled

Pod color-  
Green / Yellow

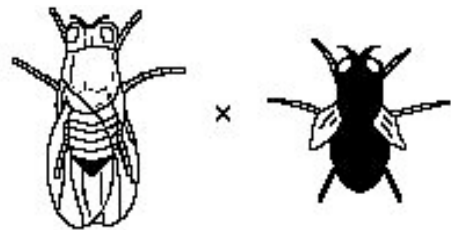
Seed color-  
Yellow / Green

Key:

PP	= purple
Pp	= purple
pp	= white

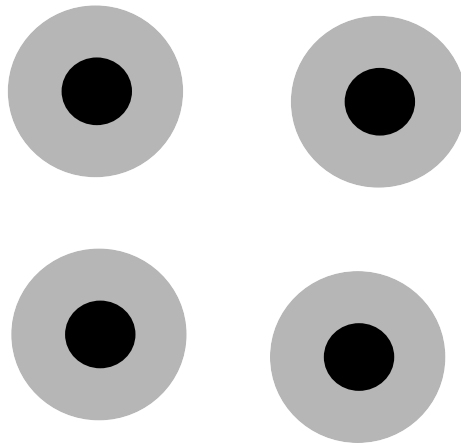
	BB	Bb	bb	
1	208	405	187	998
3	277	558	265	+1880 2878 Black
4	214	392	192	922 White
5	297	525	278	2878 : 922
Total Obs.	998	1880	922	3.12 : 1
Total Exp.	950 (38x25)	1900 (38x50)	950 (38x25)	3.00 : 1


Key:



In fruit flies, gray bodies are dominant to black bodies. Show the cross between a black body and a gray body (one of it's parents was a black body)

Eye Color - 2 layers of the iris  
- Incomplete Dominance  
- Controlled by 2 genes  
(4 total alleles)



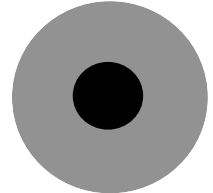
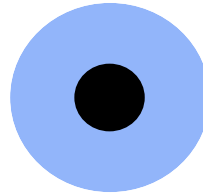
### First layer of the iris

AA = lots of pigment  
AZ = some pigment  
ZZ = little pigment

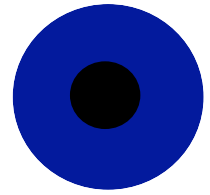
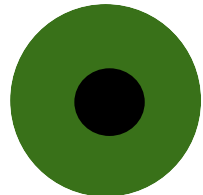
### Second layer of the iris

A'A' = lots of pigment  
A'Z' = some pigment  
Z'Z' = little pigment

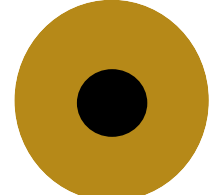
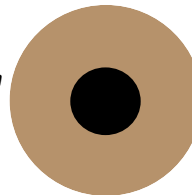
$ZZ/Z'Z'$   
light blue or gray



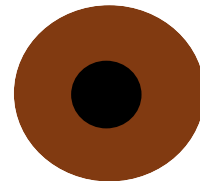
$AZ/Z'Z'$  or  $ZZ/A'Z'$   
green or dark blue



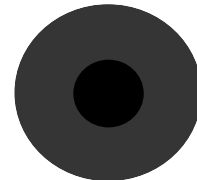
$AZ/A'Z'$  or  $AA/Z'Z'$  or  $ZZ/A'A'$   
light brown or hazel

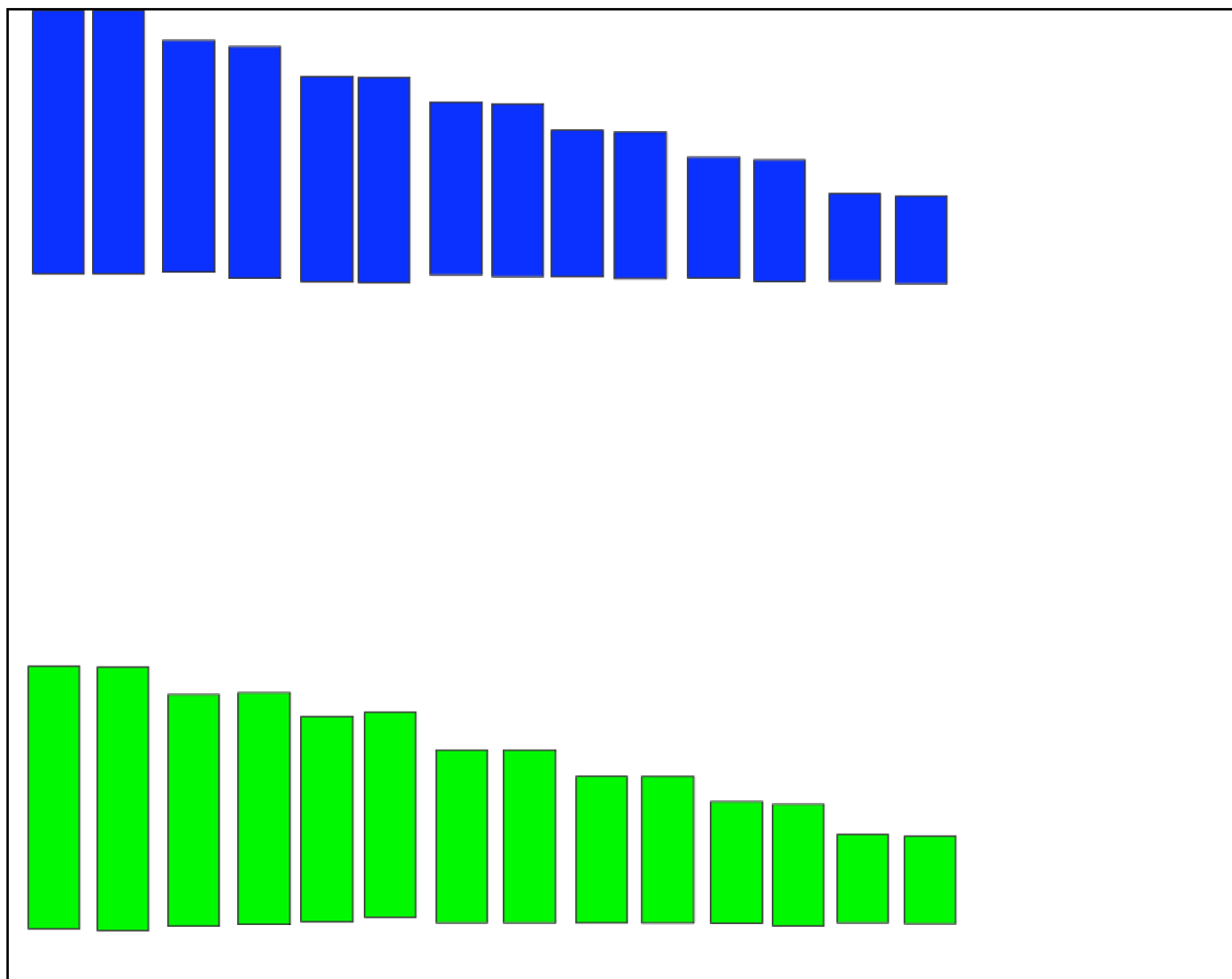


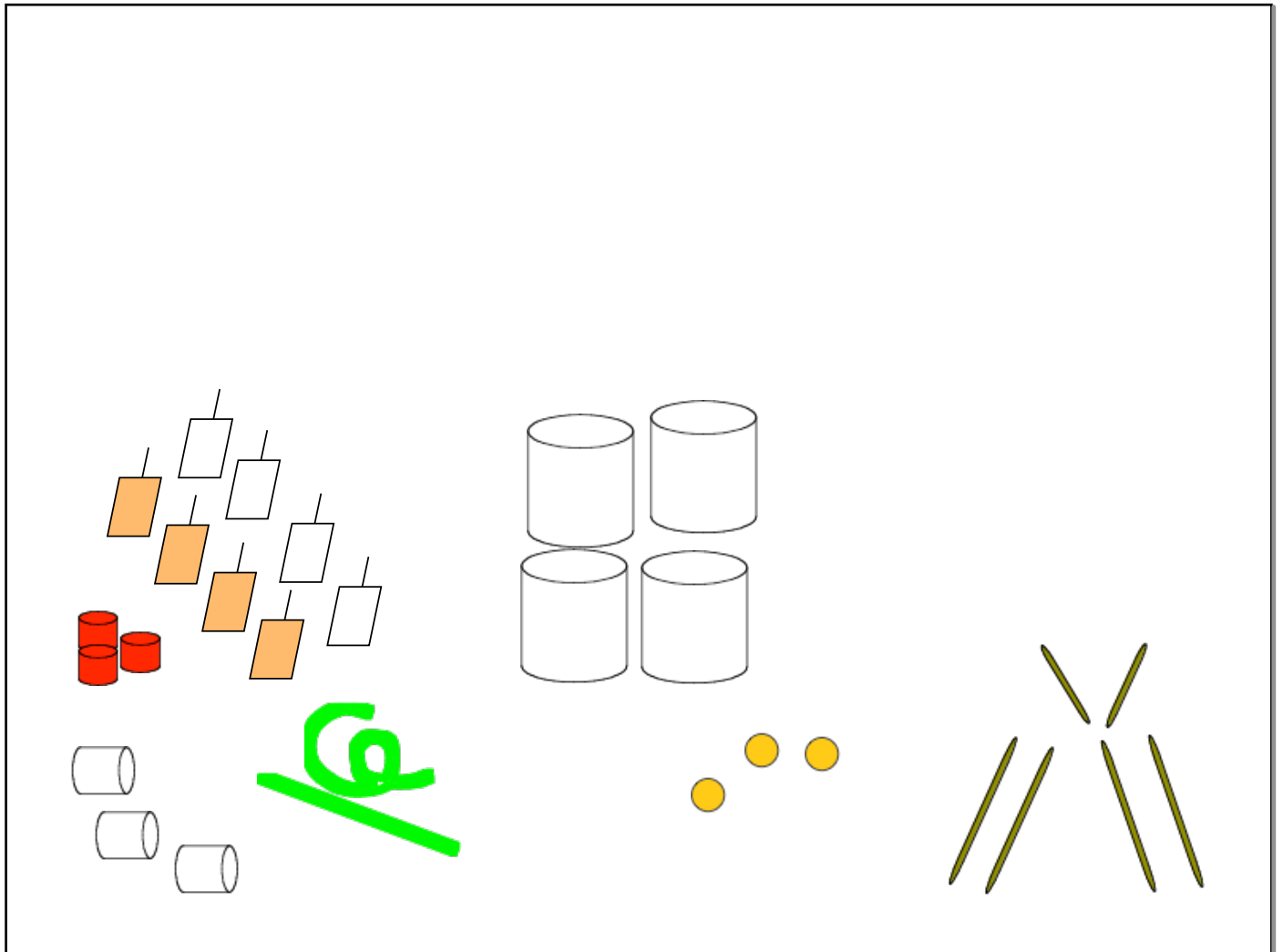
$AA/A'Z'$  or  $AZ/A'A'$   
dark brown

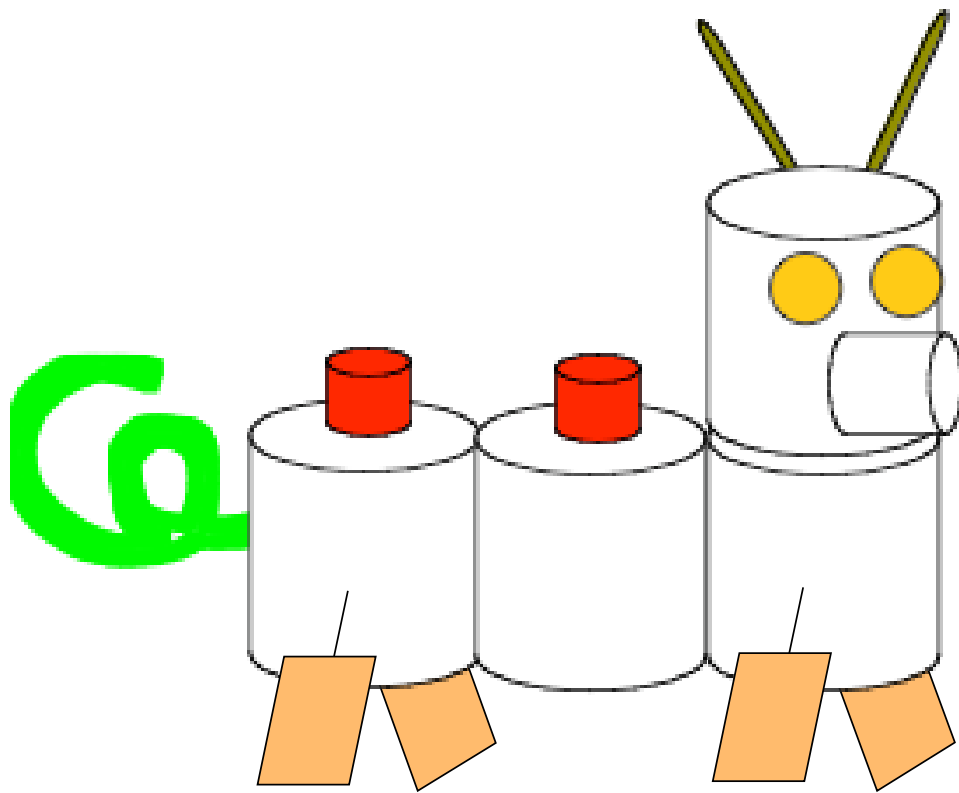


$AA/A'A'$   
very dark

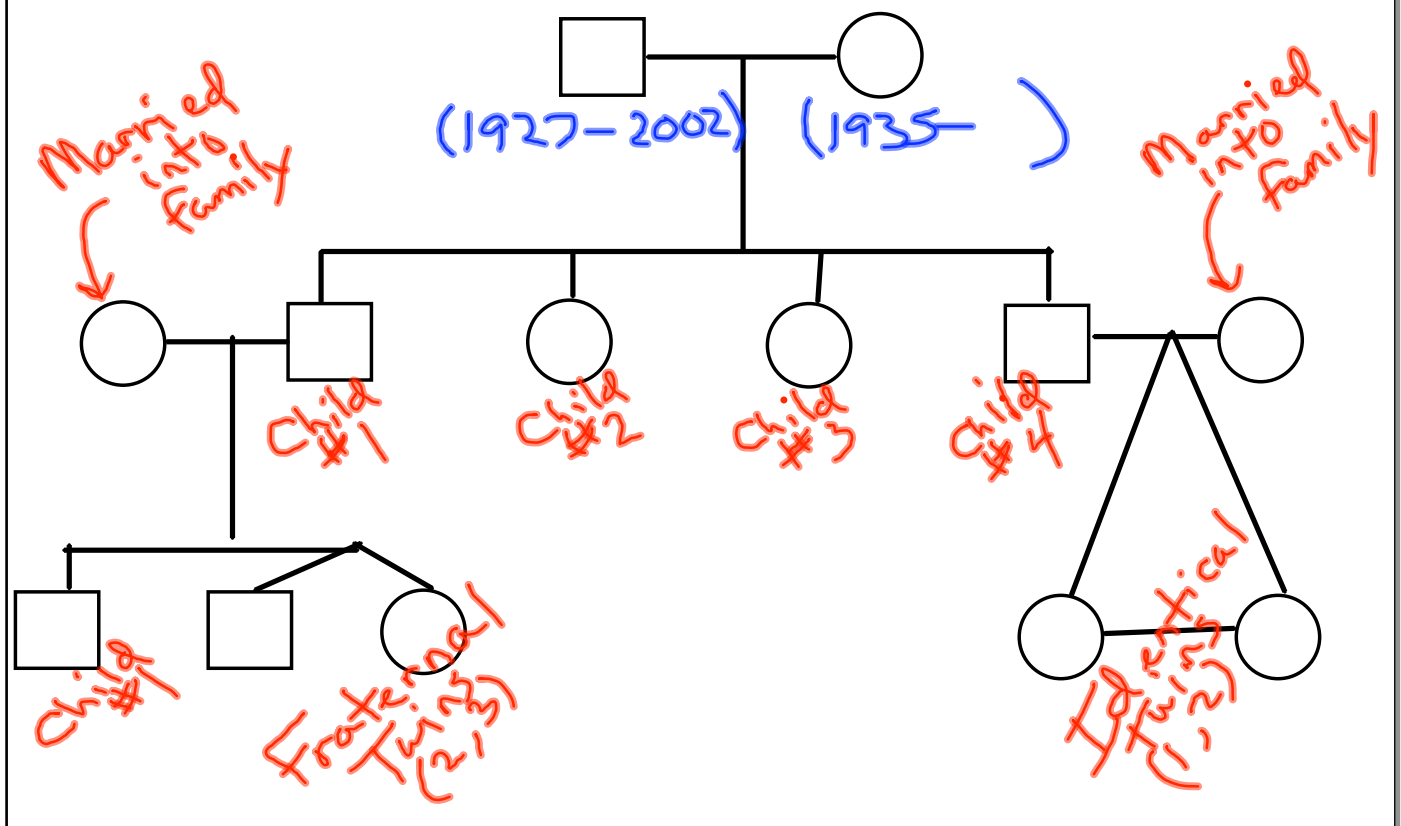


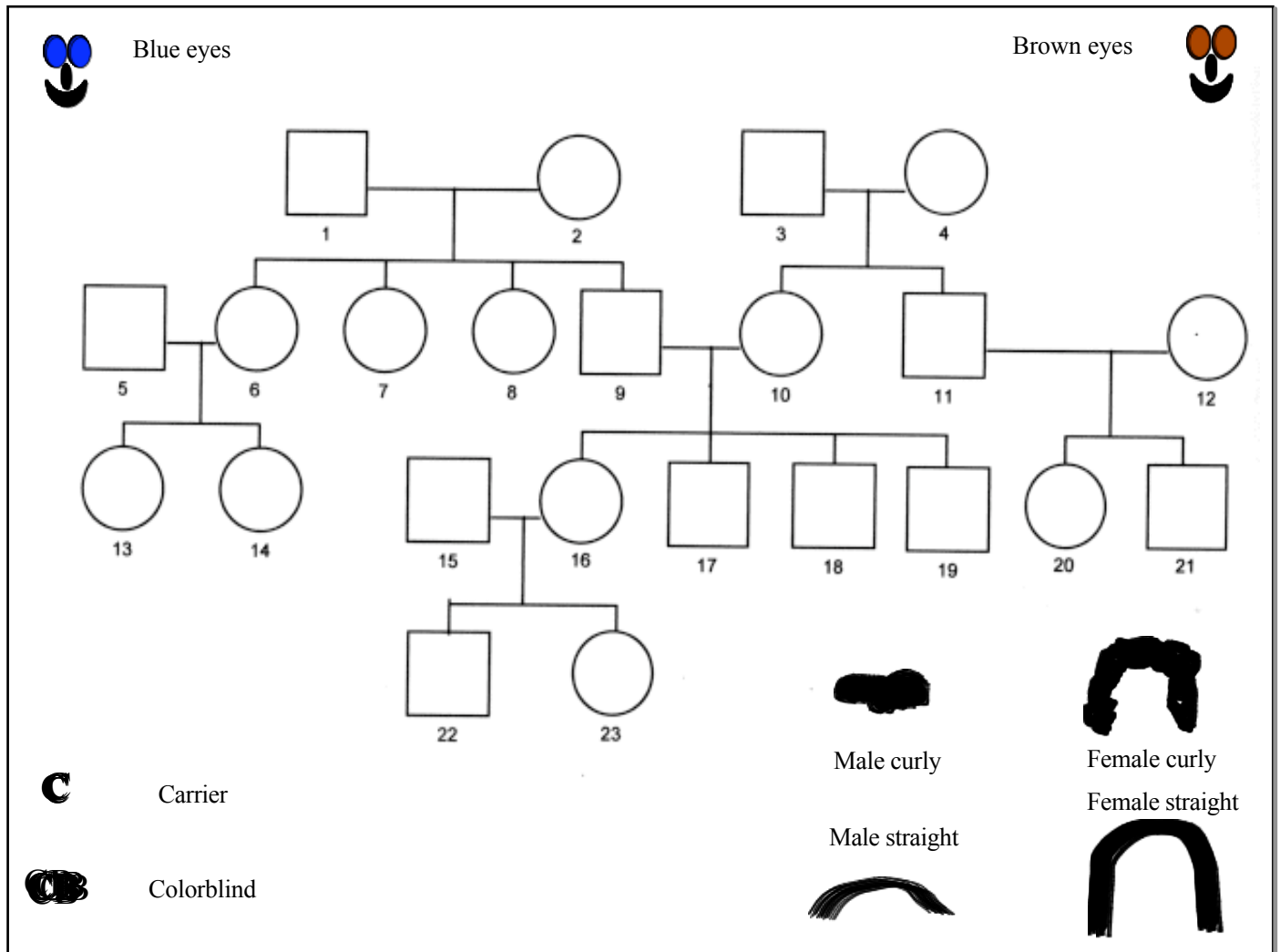


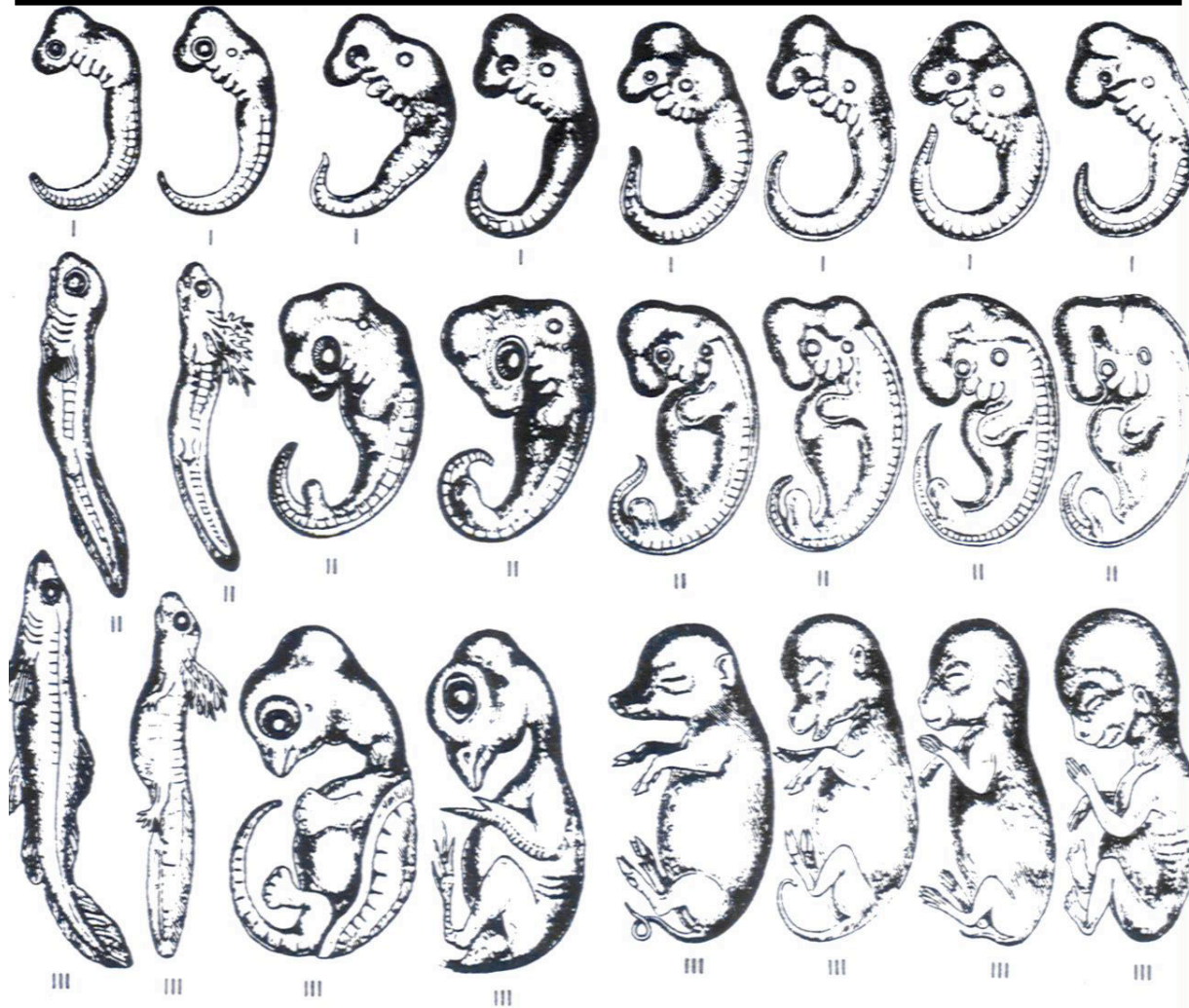


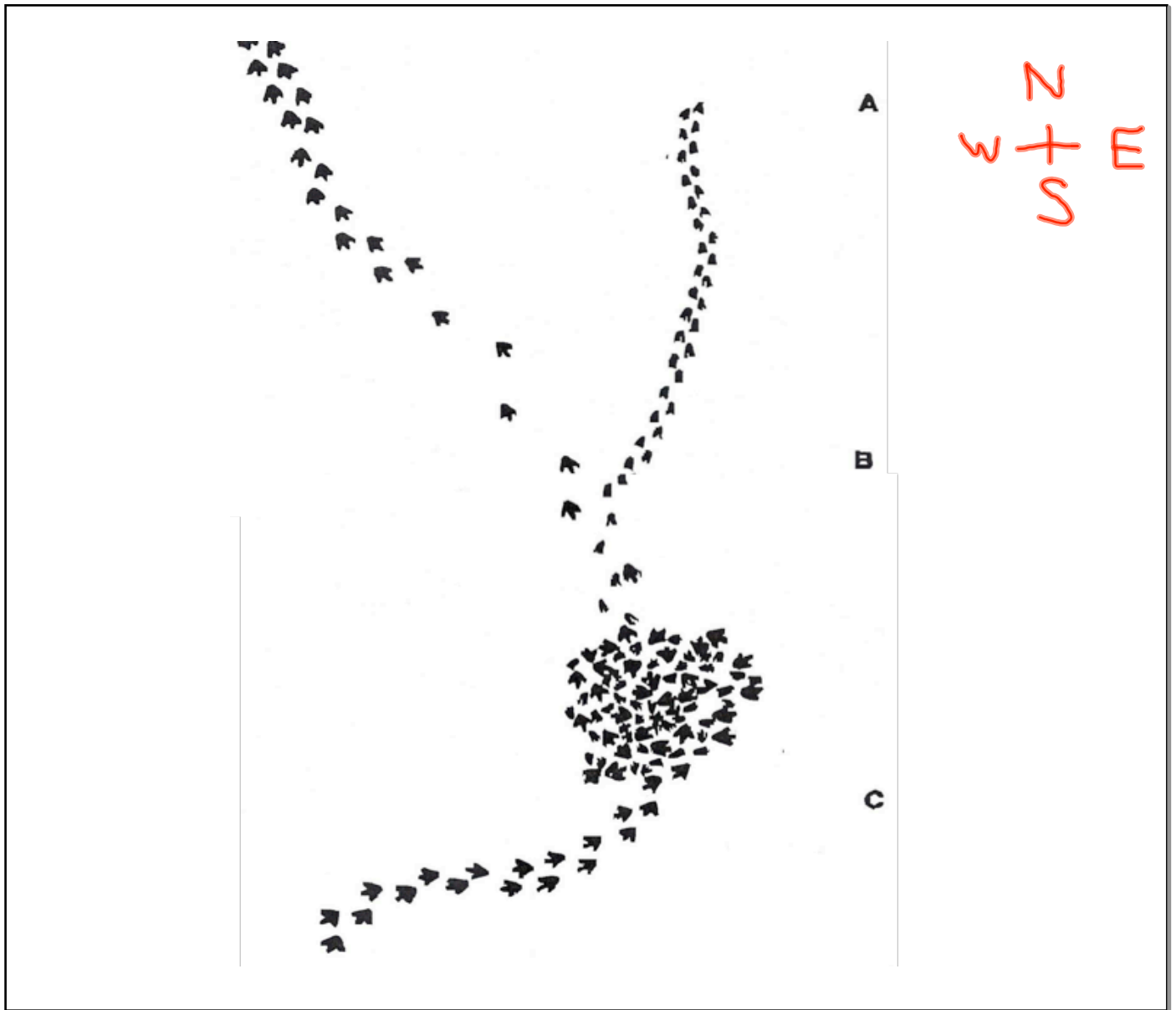


# Pedigrees











Which animals do you think  
share a more recent  
common ancestor?

 commonancestors.pps

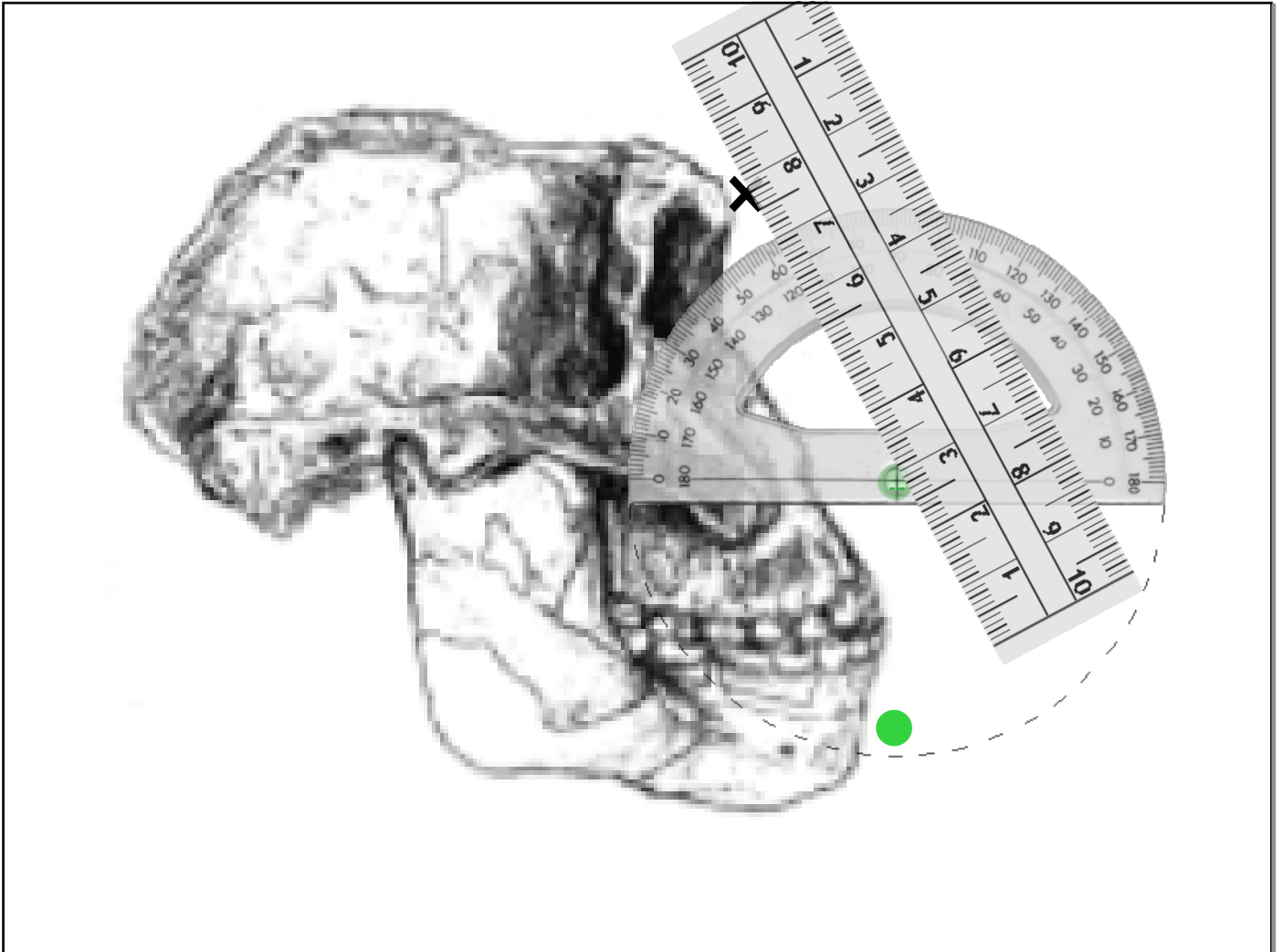
The young compete for seeds, nuts, acorns, fruits, berries, insects, slugs, and spiders.

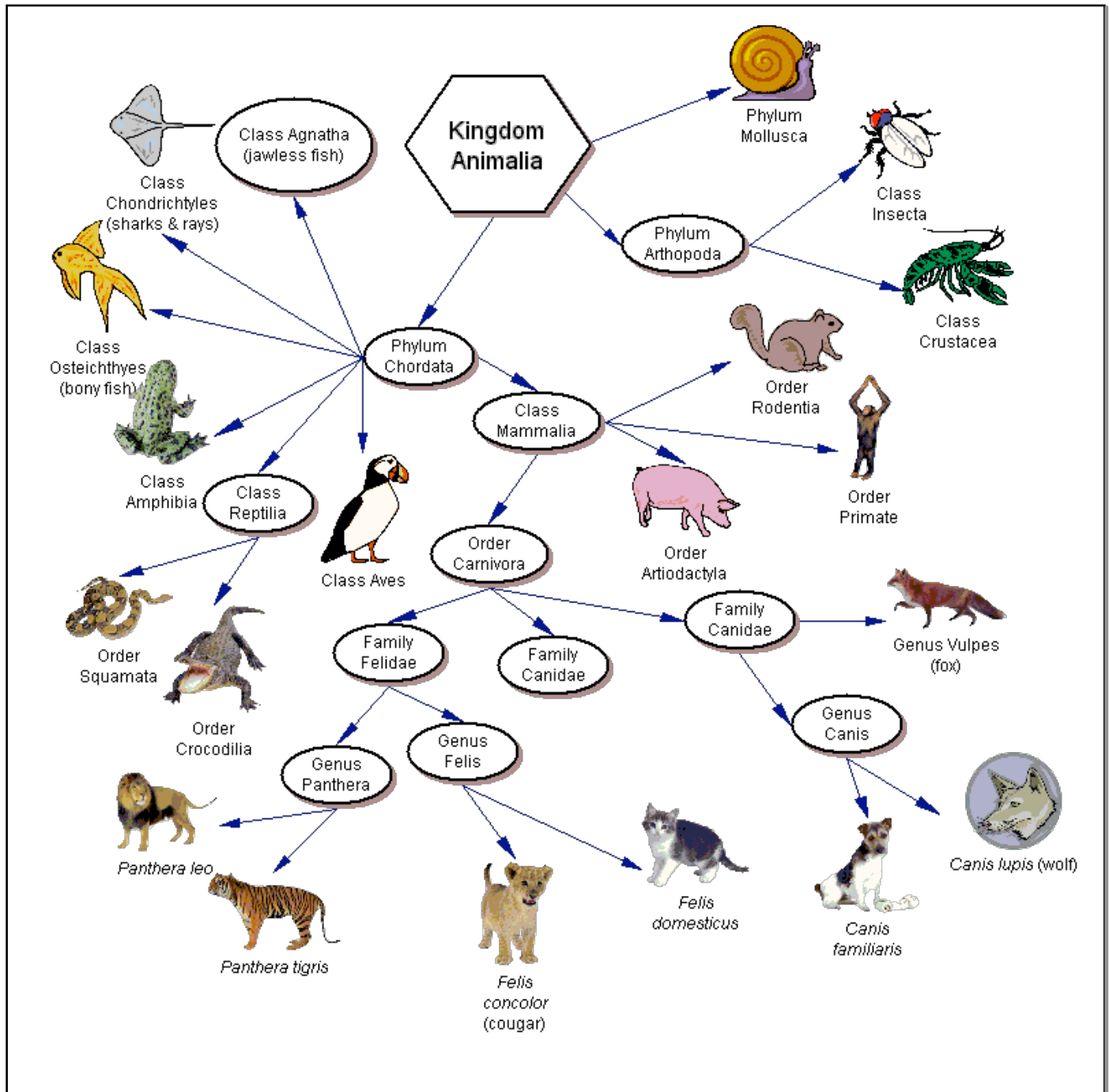
The adult is sexually mature after one year. The female will give a series of calls, called chirps, when she is ready to mate. Males will gather in her territory and fight for a chance to mate with her.

The young are suckled (nursed) for 6-8 weeks before leaving the nest to find their own territories. Some may be stronger or blend in better with their wooded habitat.

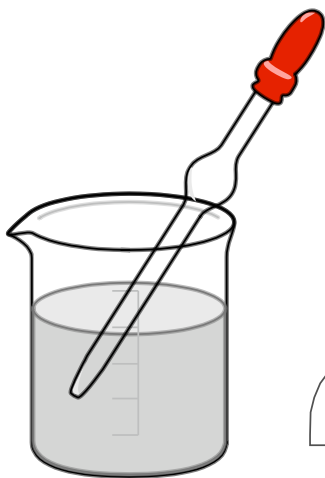
The mother has a litter of four to five offspring twice a year. Some of these will not survive.

Drag this box away  
to see what I am.

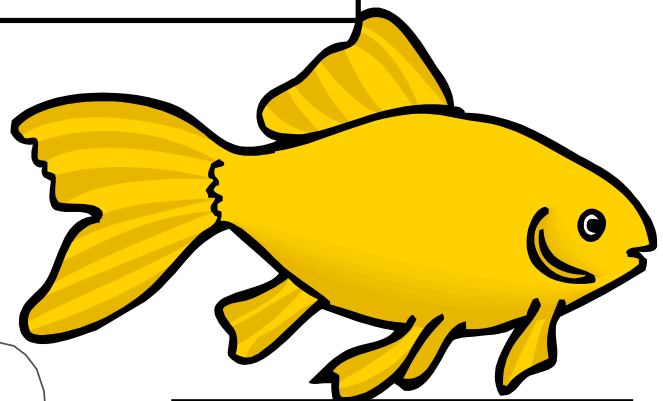




Glass  
Slide



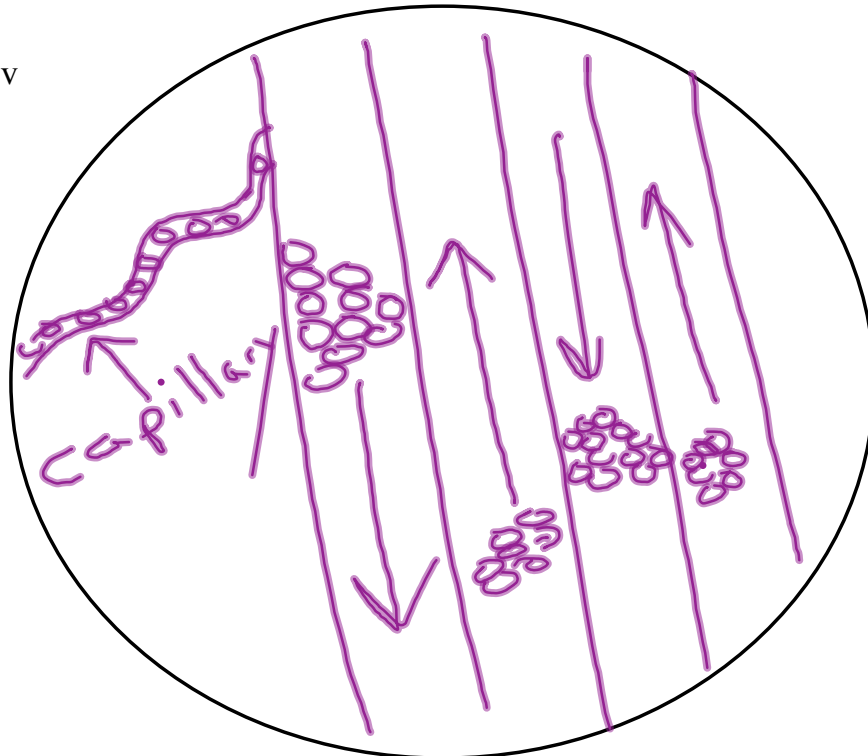
Cotton

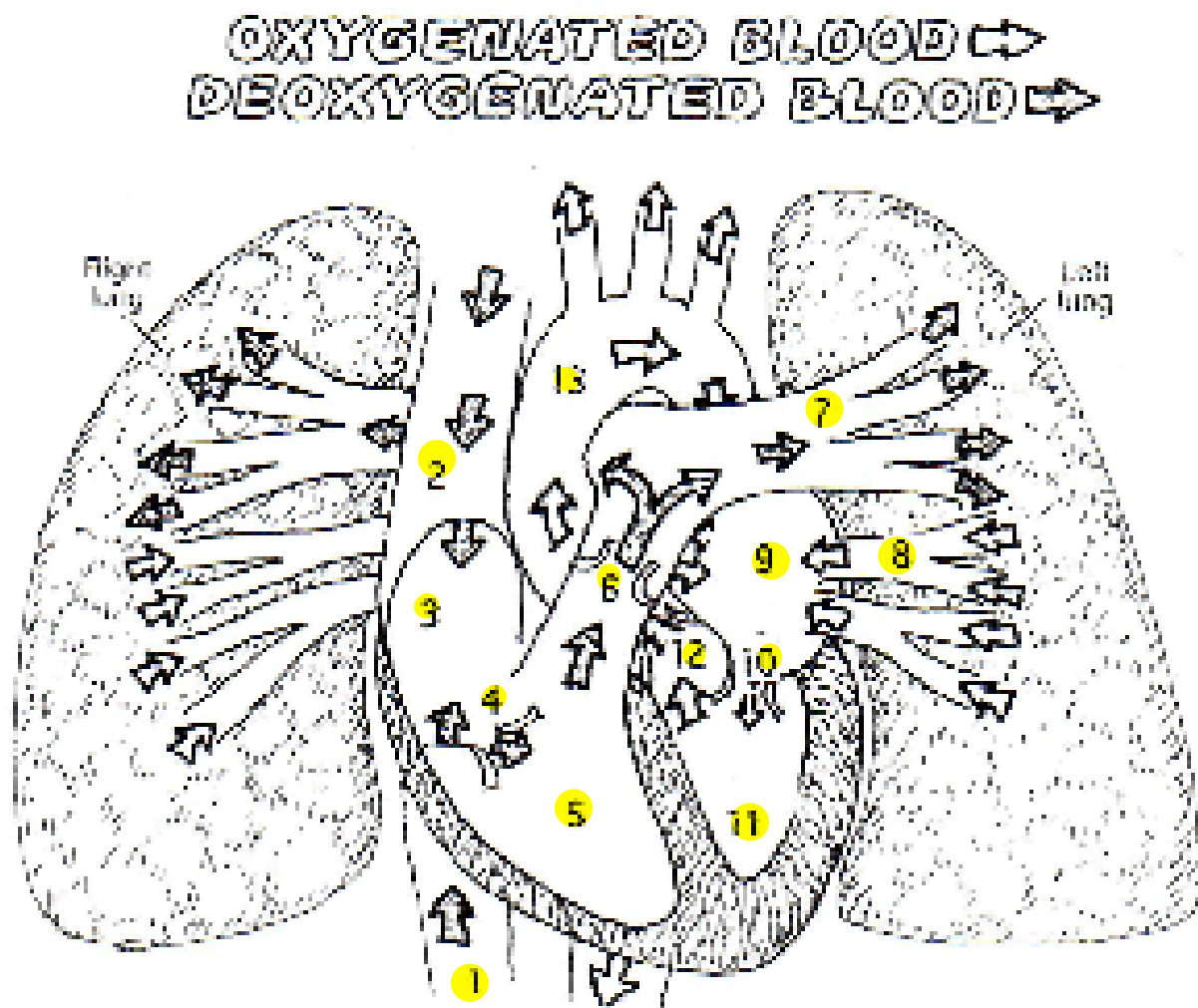


1/2  
film  
canister

goldfishscanning.mov

goldfishlowpower.mov





OXYGENATED BLOOD →   
DEOXYGENATED BLOOD → 

